

KNX ENO Tool

D

KNX ENO 620/622 Remote Control and EnOcean Bus Monitor

User Guide

Application

The KNX ENO Tool software can be used to configure the Links between various EnOcean-Sensors and the KNX/EIB EnOcean-Gateway KNX ENO 620/622.

It offers the following functionality:

- Remote Control Learn: Sensor “learn” functions can be completely managed without direct physical access to the Device.
- The device configuration of the Gateway can be read, modified, exported and saved back to either the same or another Gateway.
- EnOcean Bus Monitor showing the EnOcean Telegrams send over the KNX Bus.

Installation

Start the standard windows installer application KnxEnoTool_.msi and follow the instructions. Once installed, the application can be invoked via the start menu. It is possible that an Internet-Firewall warning will appear the first time the application is run. This is due to the auto-start of the Net'nNodeServer Service which communicates with the KNX ENO Tool via a TCP/IP connection (the service will be auto-shutdown when the KNX ENO Tool is closed). The Server is used to gain access to the KNX bus. Allow the connection - no information is sent over the Internet.

Link Configuration

The KNX ENO Tool application is able to configure the EnOcean side of the Gateway, that is, the connections to the EnOcean Sensors. The KNX configuration however can only be managed by the ETS® Software and this is required before the EnOcean Sensors are learnt. In this way the KNX Installation remains consistent while the EnOcean Sensor can be flexibly assigned.

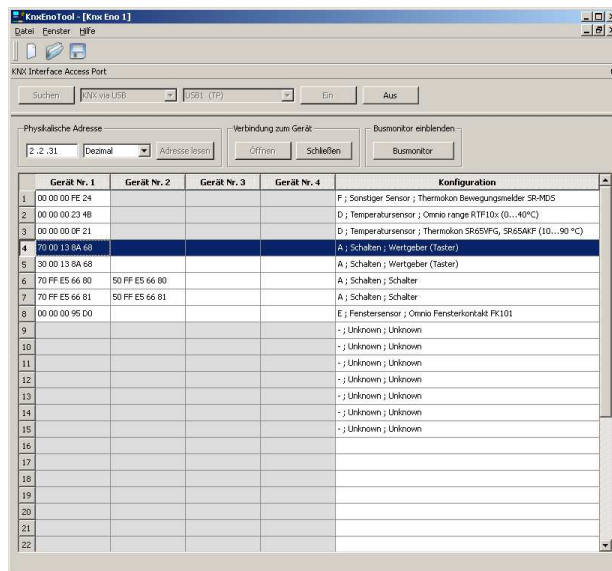


Figure 1: List of read links

Before an existing configuration from the KNX ENO Gateway can be read a Bus Connection has to be opened. The following interfaces are supported: USB, IP Routing and IP Tunneling. Once a connection has been opened the individual (physical) address of the Device has to be specified. It is possible to read the Device Address of the Device with an active Learn LED over the KNX Bus. All learnt links and channel configuration/status fields are automatically read from the Device once a verified connection has been made with the device. The read links are shown in the list and a grey field indicates that that field is not editable while either (i) it was not read from the device (i.e. the read was canceled) or (ii) the channel function only supports a limit number of links.

The Channel Function (read only) is shown in the configuration column as programmed by ETS.

To edit a link select it with the cursor and open with context specific menu with a right mouse click. The following options are available:

- **Learn:** Sets the selected channel in the Gateway into Learn Mode. An EnOcean Sensor can then be learnt directly via button press.
- **Erase Links:** Erases the selected channel in the Gateway
- **Read Channel:** Reads the learnt links of the selected channel
- **Write Channel:** Writes the links of the selected channel to the Gateway
- **Read All Channels:** All channels of the Gateway

will be read.

- **Write All Channels:** Writes all channels to the Gateway.

Selected rows and columns can be exported to the clipboard (Ctrl-C) and copied into another application such as Excel (Ctrl-V).

Bus Monitor

	Länge	Org	Daten	Id	Status	Prüfsumme	Datum
12	08	07	BC 62 00 00	00 00 FE 24	00	5F	2009-10-09
13	08	06	08 00 00 00	00 00 95 D0	01	7F	2009-10-09
14	08	07	BC 66 00 0F	00 00 FE 24	00	65	2009-10-09
15	08	07	D7 FF E7 08	00 00 0F 21	00	07	2009-10-09
16	08	07	A6 11 00 0F	00 00 FE 36	00	0C	2009-10-09
17	08	07	A6 11 00 0F	00 00 FE 36	01	0D	2009-10-09
18	08	07	BC 66 00 0D	00 00 FE 24	00	63	2009-10-09
19	08	07	BC 6C 00 0D	00 00 FE 24	00	69	2009-10-09
20	08	07	BC 65 00 0D	00 00 FE 24	00	62	2009-10-09
21	08	07	BC 6A 00 0D	00 00 FE 24	00	67	2009-10-09
22	08	07	A5 16 00 0F	00 00 FE 36	00	10	2009-10-09
23	08	07	A5 16 00 0F	00 00 FE 36	01	11	2009-10-09
24	08	07	CB 5D 71 0F	00 00 23 48	00	28	2009-10-09
25	08	06	08 00 00 00	00 00 95 D0	01	7F	2009-10-09
26	08	07	D7 FF E6 08	00 00 0F 21	01	07	2009-10-09
27	08	07	A5 18 00 0F	00 00 FE 36	00	15	2009-10-09
28	08	07	A5 18 00 0F	00 00 FE 36	01	16	2009-10-09
29	08	07	BC 71 00 0D	00 00 FE 24	00	6E	2009-10-09
30	08	07	BC 66 00 0D	00 00 FE 24	00	63	2009-10-09
31	08	07	BC 68 00 0D	00 00 FE 24	00	68	2009-10-09
32	08	07	CC 5D 71 0F	00 00 23 48	00	29	2009-10-09
33	08	06	08 00 00 00	00 00 95 D0	01	7F	2009-10-09
34	08	07	D7 FF E5 08	00 00 0F 21	01	06	2009-10-09
35	08	07	A5 20 00 0F	00 00 FE 36	00	1A	2009-10-09
36	08	07	A5 20 00 0F	00 00 FE 36	01	1B	2009-10-09
37	08	07	BC 65 00 0D	00 00 FE 24	00	62	2009-10-09

Figure 2: EnOcean Bus monitor

The bus monitor can be shown and hidden as required, either as a part of the main window or “undocked” and separate to the main window. If hidden it continues to capture all Telegrams (once started). Telegrams from Sensors that are recognized (i.e. from learnt Sensors) are shown in grey, Telegrams from unknown Sensors in white. It is possible to open connections to multiple Gateways (via “File->New”) and in this way it is possible, for example, to use the Bus Monitor to determine the optional gateway for a specific Sensor.



Weinzierl Engineering GmbH
84558 Tyrlaching
E-Mail: info@weinzierl.de
Web: www.weinzierl.de